

Grand Tour

— DESIGNED BY PRIDE SASSER FOR —
CENTURY FURNITURE



Lighting & Accessories

CENTURY FURNITURE®

Infinite Possibilities. Unlimited Attention.®

CenturyFurniture.com



Grand Tour

— DESIGNED BY PRIDE SASSER FOR —
CENTURY FURNITURE

Lighting & Accessories



Presenting Grand Tour...
a collector's journey through the world
of design and material.
From parchment, shagreen and stone
to mahogany, pine and walnut,
this collection
delights in the details
of each hand wrought piece.
Become a collector with us.





TABLE OF CONTENTS

TABLE LAMPS	4-13
FLOOR LAMPS	14-17
CHANDELIERS	18-27
CANDLESTICKS & CANDLESTANDS	28-31
SCONCES & SHELVES	32-35
TRAYS & PLATE	36-37
URNS & PLANTERS	38-41
VASE & OBELISK	42-45
UNIQUE ACCESSORIES	46-47
WALL ART	48-51
NUMERICAL INDEX	52-53



SA8096 Table Lamp

Boasting a black lip shell, this unique brass table lamp with its plexi-glass base and linen satin shade will be a perfect touch for a contemporary or eclectic coastal setting.

W6.5 in. D6.5 in. H24.25 in.



SA8064 Table Lamp

Mahogany solids and inlaid faux tortoise with antique brass finish hardware accents base with antique paper shade.

W9.5 in. D9.5 in. H28 in.



SA8005 Table Lamp

A touch of whimsy is created by this distinctive table lamp with its coral-like wrought iron base in a delightful antique white finish.

The look is completed by a simple raffia shade.

W 15 in. D 15 in. H 32 in.



SA8007 Table Lamp

Inspired by nature, this unique table lamp features a gracefully curved metal base that captures the look of bound branches in a rich brass finish. A simple raffia shade adds to the natural feeling.

W 10 in. D 10 in. H 31.5 in.



SA8010 Table Lamp

A rich classical look is beautifully created with this beautiful table lamp. It features a turned cast stone base with a rich antique marble finish, set off by a raffia shade.

W 15 in. D 15 in. H 30 in.

SA8006 Table Lamp

This handsome table lamp takes a traditional urn motif, gives it a striking antique pewter finish and then combines it with a sparkling plexi-glass base and a raffia shade to create an eclectic look that will be complimentary to either traditional or contemporary furnishings.

W 15.25 in. D 15.25 in. H 32 in.



SA8009 Table Lamp

An open wrought iron cube underlays a raffia shade to create a smart contemporary feeling for this table lamp.

W 20 in. D 20 in. H 30 in.

SA8012 Table Lamp

With the look of hand-forged wrought iron, the base of this unique lamp offers a rustic ambience in an intriguing counterpoint to its simple raffia shade.

W 15 in. D 15 in. H 31 in.





SA8013 Table Lamp

This handsome creation uses an Inlaid antique mirror base with antique silver leaf trim in a stepped design and is accented by a square antique paper shade.

W 8 in. D 8 in. H 30 in.



SA8056 Table Lamp

Topped by a unique black lip pearl shade, this table lamp features an inlaid Macassar ebony base with silver plated feet.

W 7.25 in. D 7.25 in. H 25 in.



SA8057 Table Lamp

With the same shape as the SA8056, this lamp offers an inlaid capiz shell base with silver plated feet and a mother of pearl shade for a lighter feeling.

W 7.25 in. D 7.25 in. H 25 in.

SA8058 Table Lamp

For a unique transitional look, this lamp offers sculptural wrought iron gathered above a plexi-glass base and topped by a round antique paper shade.

W 15 in. D 15 in. H 35 in.



SA8059 Table Lamp

Displaying the rich graining of Macassar ebony veneer in its three part base this transitional creation is topped by a tall antique paper shade.

W 8 in. D 8 in. H 30.5 in.



SA8060 Table Lamp

A handsome panel in beautifully patterned walnut solids over a light bronze finished steel plated base create a dramatic statement in this distinctive table lamp. It features a rectangular antique paper shade to accent the shape of the base.

W 16.75 in. D 7.75 in. H 26 in.





SA8061 Table Lamp

Crafted of mahogany solids in a natural finish, this lamp features inlaid faux tortoise with antique brass finished hardware and trim and an antique paper shade. (The same lamp is available with a black finished paper shade as SA8066)

W6 in. D6 in. H28.5 in.



SA8066 Table Lamp

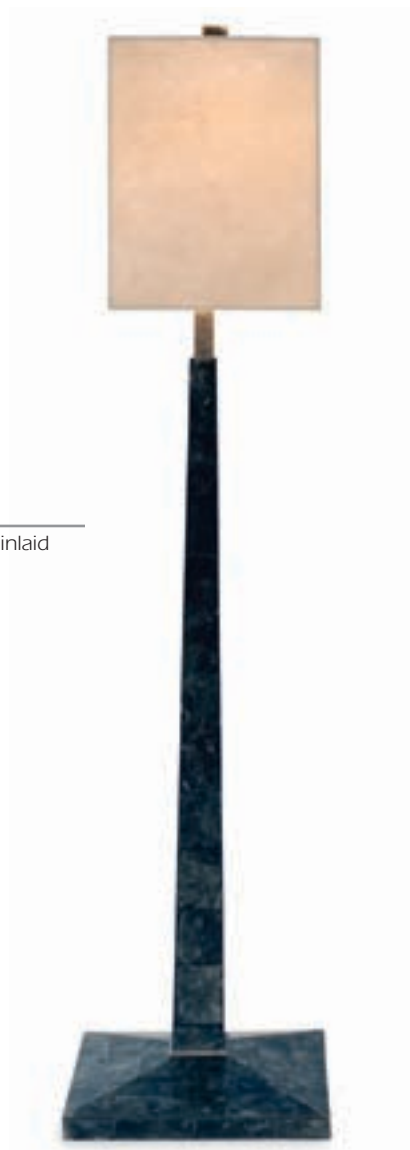
Like the SA8061 (shown above) this lamp is crafted of mahogany solids in a natural finish and features inlaid red faux tortoise with antique brass finish hardware and trim. This one comes with a black finished paper shade.

W6 in. D6 in. H28.5 in.

SA8120 Table Lamp

This tall table lamp is crafted of select Asian hardwoods inlaid with mica and zinc plated accents, topped with a handmade paper shade.

W 10.25 in. D 10.25 in. H 45 in.



SA8068 Table Lamp

With its light antique bronze metal base and black paper shade, this table lamp will comfortably complement traditional or transitional interiors.

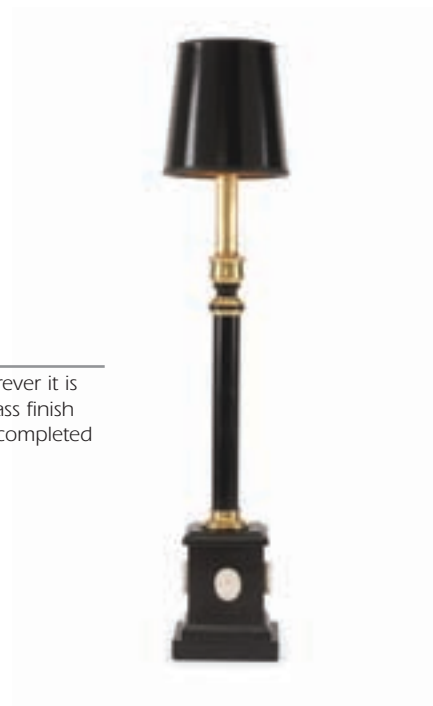
W 13 in. D 13 in. H 40.5 in.



SA8086 Table Lamp

Here's a table lamp with just a hint of Asian flair from its Inlaid shagreen and metal base with beaded silver finished trim and an antique silver leaf finished paper shade.

W15 in. D15 in. H33 in.



SA8098 Table Lamp

This pretty table lamp will make a style statement wherever it is used. It is crafted of mahogany solids with antique brass finish hardware and intaglio accents on the base. The look is completed with a black finished card shade.

W4.75 in. D4.75 in. H23.25 in.



SA8111 Table Lamp

This handsome table lamp takes a traditional candlestick motif, and embellishes it with an antique brass finished base and a woven paper shade.

W8 in. D8 in. H27 in.

SA8101 Table Lamp

Boasting a stylized seahorse motif, this unique table lamp with its electroform silver finish and starfish base with handsewn fabric shade will bring a whimsical touch to a contemporary or eclectic coastal setting.

W 9 in. D 9 in. H 28 in.



SA8115 Table Lamp

With its hanging glass bead accents over silver-plated brass on an acrylic base and small round fabric shade, this eye-catching lamp promises to make a style statement in your contemporary or transitional interior.

W 6 in. D 6 in. H 24.75 in.



SA8116 Table Lamp

Also featuring hanging glass bead accents over silver-plated brass on an acrylic base and with a round fabric shade, this larger lamp will bring the "wow" factor to a larger contemporary or transitional table.

W 15 in. D 15 in. H 29 in.





SA8014 Floor Lamp

Rich traditional styling crafted in metal with a turned post over a circular base on feet, and embellished with an antique brass finish and a shaped fabric shade.

W 19 in. D 19 in. H 64 in.



SA8113 Floor Lamp

This handsome floor lamp provides a sophisticated traditional silhouette with a round post over a circular tray base; it is enhanced by a distinctive aged bronze finish and a woven paper shade.

W 18 in. D 18 in. H 64.75 in.





SA8121 Floor Lamp

This striking floor lamp is crafted of select Asian hardwoods inlaid with mica and zinc plated accents, topped with a handmade paper shade.

W 15 in. D 15 in. H 64.75 in.



SA8117 Floor Lamp

Crafted of polished antique wrought iron, this tripod floor lamp provides an industrial, yet sophisticated look that's perfect for today's transitional styling; it is topped by a round raffia shade.

W 18 in. D 18 in. H 67.25 in.



SA8015 Floor Lamp

With a rustic wrought iron base with a tripod shape, this unique floor lamp conveys a distinctive contemporary western look that is sophisticated enough for even the most stylish interiors; it is topped by a white fabric shade.

W22 in. D22 in. H84 in.



SA8028 Chandelier

A lantern style chandelier with four candle lamps offers the look of bygone days. It is crafted of metal with a distinctive antique finish.

W18 in. D18 in. H44 in.



SA8030 Chandelier

Created of metal with an antique brass finish and clear glass with four candles, this impressive chandelier offers a period look ideal for traditional interiors.

W20 in. D20 in. H45 in.



SA8072 Chandelier

This four lamp lantern style chandelier is metal with an antique brass finish accented by seeded glass.

W18 in. D18 in. H40 in.



SA8073 Chandelier

Ruggedly traditional, this eight lamp chandelier is handcrafted of wrought iron with zinc plating and has seeded glass for a historic look.

W20 in. D20 in. H24 in.



SA8094 Chandelier

Reminiscent of a Victorian bird cage, this gracious six lamp chandelier is handcrafted in metal and embellished with an antique bronze finish and clear glass.

W25.75 in. D25.75 in. H44 in.

SA8092 Chandelier

Crowned by a band of interlocked rings, the unique transitional creation is made of carbon steel plated metal and inlaid with capiz shells.

W27.25 in. D15.25 in. H38 in.



SA8104 Chandelier

Crafted with a wrought iron framework of joined circles with a silver leaf finish and inlaid capiz shells, a circle pattern is repeated throughout the cylindrical tiered design of this transitional chandelier.

W25 in. D25 in. H26 in.



SA8022 Chandelier

Four oval rings in a distinctive black lacquer finish with gold leaf accents surround a four lamp base to create a dramatic statement for this transitional chandelier.

W28 in. D28 in. H40 in.



SA8031 Chandelier

Crafted of zinc finished metal with cast accents, this spherical shaped chandelier suggests a hip industrial look that lends itself perfectly to contemporary styling.

W29 in. D29 in. H33 in.

SA8023 Chandelier

A touch of whimsy is created by this distinctive chandelier with its coral-like wrought iron body in a delightful antique white finish. It is completed by ten hurricane lamps for romantic sparkle.

W 36 in. D 36 in. H 41 in.



SA8033 Chandelier

Perfect for your coastal retreat (or anywhere you'd like to create one), the opaque cylinder of this simple creation is embellished with a ring of "found" sea shells around the bottom.

W 12.75 in. D 12.75 in. H 22 in.



SA8026 Chandelier

Gracefully curved wrought iron with cast accents and gold leaf trimmed paper shades give this generously scaled six lamp chandelier an inviting Old World ambience.

W 60 in. D 60 in. H 53 in.

SA8034 Chandelier

Crafted in wrought iron with a brass finish and a white shade, this large chandelier offers understated styling that is always in good taste.

W 32 in. D 32 in. H 60 in.



SA8044 Chandelier

With a delightful whitewash finish on Scandinavian pine, wrought iron with cast accents, draped glass bead trim and simple raffia shades bring Old World charm to this beautiful five lamp chandelier.

W 35 in. D 35 in. H 39 in.



SA8045 Chandelier

Evoking a Renaissance feeling, this six lamp chandelier features a whitewash finish on Scandinavian pine with wrought iron and cast accents with raffia shades.

W 36.75 in. D 36.75 in. H 34.5 in.



SA8110 Chandelier

This dramatic chandelier features an antique white finished fiberglass body as the focal point for five gracefully curved wrought iron arms with antique gold leaf and white wash accents...perfect for traditional or transitional interiors.

W 37 in. D 37 in. H 19.5 in.

SA8075 Chandelier

Fresh contemporary styling in metal with a light bronze finish with six tall paper shades.

W 31 in. D 31 in. H 44 in.



SA8080 Chandelier

Sophisticated styling with an unexpected use of materials make this four lamp chandelier appropriate for a range of interiors. Crafted of metal with a light bronze finish, it is embellished by inlaid antiqued mirror accents and paper shades.

W 29 in. D 29 in. H 27 in.



SA6035 Candlestand

This large round glass and rust finished metal candlestand will accommodate up to three large pillar candles for a pleasing glow.

W 18 in. D 18 in. H 19.25 in.



SA6023 Hurricane Lamp

This hurricane lamp offers the look of bamboo so frequently found in Chippendale and other traditional stylings, beautifully crafted in metal with an antique brass finish and clear glass.

W 8 in. D 8 in. H 18 in.



SA6018 Candlestick

Beautiful displays of candlelight were once reserved only for special events. Now a delightful candlestick like this one can bring pleasure to all your occasions. Crafted in turned metal with an antique pewter finish, it rests on a round base with three feet.

W 5.75 in. D 5.75 in. H 17.25 in.



SA6052 Candle Holder - Set of Three

Handcrafted from beautifully grained solid walnut with an antique bronze finished metal inlay, this set of three candle holders will be a striking addition to any room.

Large holder

W 11.5 in. D 2.75 in. H 8 in.

Medium holder

W 11.25 in. D 2 in. H 5 in.

Small holder

W 9.75 in. D 2.75 in. H 7 in.



SA6024 Candle Stands - Pair

These unique candle stands will bring the beauty of nature to any room setting, regardless of style. They are created from exotic black lip shell mounted on a wood base.

W 5 in. D 4.5 in. H 5 in.

SA6054 Candle Stand

Handcrafted in wrought iron with an antique brass finish and resting on a circular tray base, this traditional candle stand will be an appealing accessory for any decor.

W 9 in. D 9 in. H 23.5 in.



SA6055 Candle Stand

With its 49" height and gracefully shaped tripod base, this metal candle stand with its unique rust finish will be a perfect accent for a range of interior styles and room settings.

W 20 in. D 17 in. H 49 in.





SA6000 Wall Shelf

Tall wall shelf with Asian inspiration features a gold leaf finish with brass figures flanking each of three display shelves.

W18 in. D14 in. H65 in.



SA8082 Wall Sconce - Pair

For a unique transitional look, this pair of wall sconces offers sculptural wrought iron with a light bronze finish gathered in front of a black lacquer base.

Wall wire covers are included.

W8 in. D7.5 in. H22.5 in.



SA6008 Corbel - Pair

Bring a touch of the seashore to your favorite room with this delightful pair of corbels. Each features a seashell motif with a ring of "found" sea shells inlaid across the top.

W 14.25 in. D 8 in. H 12.75 in.



SA8040 Wall Sconce - Pair

These unique wall sconces will bring the beauty of nature to any room setting, regardless of style. Light fixture is concealed behind a panel with an exotic black lip shell and a black lacquer finish in front of Shagreen with metal trim back plates.

Wall wire covers are included.

W 8 in. D 6 in. H 13 in.



SA6056 Corbel - Pair

Elegant traditional corbels feature a faux natural tortoise finish parchment with black lacquer accents.

W 12 in. D 6.5 in. H 12 in.

SA8042 Wall Sconce - Pair

Create a beautiful reflection with this pair of decorative wall sconces. Each features a candle lamp in front of a sparkling mirror framed with inlaid capiz shell trim.

Wall wire covers included.

W 10.5 in. D 5 in. H 15.25 in.



SA8083 Wall Sconce - Pair

Each of these wall sconces is crafted of select Asian hardwood solids with an ebonized finish and inlaid with black lip pearl and capiz shell trim. Wall wire covers included.

W 12 in. D 5.75 in. H 22 in.



trays & plates



SA6015 Bamboo Tray

Asian flair in a smart serving tray crafted of crushed bamboo with metal trim and a rich walnut finish.

W **17.75 in.** D **14 in.** H **2 in.**



SA6017 Tray

This generously scaled serving tray features figured Macassar veneer with a mirrored bottom and metal hand holds.

W **20 in.** D **13 in.** H **2 in.**



SA6028 Shell Plates - Pair

This pair of small shell plates on metal legs are crafted from a treasured "found" shell. Great for placing spare change on a dresser or nightstand or as a place for keys by the door.

W **7.5 in.** D **6 in.** H **2 in.**



SA6001 Urn on Pedestal

This large-scaled urn is crafted of cast stone with figures from antiquity and a rich verdigris finish.
(The same urn is available with an antique marble finish as SA6002)
W28 in. D28 in. H60 in.



SA6002 Urn on Pedestal

This large-scaled urn is crafted of cast stone with figures from antiquity and an antique marble finish.
(The same urn is available with a verdigris finish as SA6001)
W28 in. D28 in. H60 in.



SA6003 Planter

A generously scaled traditional planter crafted in metal with an antique brass electroform finish.

W26 in. D26 in. H26 in.



SA6004 Planter

This pretty round planter is crafted of cast stone with an antique marble finish and features a seashell motif...perfect for coastal or even urban contemporary settings!

W24.5 in. D24.5 in. H19.75 in.

SA6006 Urn

An impressive decorative urn embellished with a lion's head and other classical Greco-Roman figures and a rust electroform finish. (The same urn is available with an antique pewter finish as SA6007)

W22 in. D18.5 in. H32 in.



SA6007 Urn

An impressive decorative urn embellished with a lion's head and other classical Greco-Roman figures and a rust electroform finish. (The same urn is available with a rust finish as SA6006)

W22 in. D18.5 in. H32 in.







Mirrored Obelisk

Decorative obelisks in two sizes that add classical grace to any interior setting, whether used individually or in pairs. They are crafted of inlaid antiqued mirror with an antiqued silver leaf finish base.

SA6041 Small

W6 in. D6 in. H24.5 in.

SA6042 Large

W7 in. D7 in. H28.25 in.



SA6013 Waste Can

Even your waste can can be stylish and decorative. This one is crafted from select Asian hardwood solids with inlaid antiqued mirror and silver leaf accents.

W 11 in. D 11 in. H 12 in.

SA6034 Antiqued Mirrored Vase

An especially handsome vase with inlaid antiqued mirror on an antique silver leaf finished base.

W 10.5 in. D 10.5 in. H 16 in.



SA6039 Obelisk

A decorative obelisk with inlaid antiqued mirror on an antique silver leaf finished base.

W 6.75 in. D 6.75 in. H 20 in.

SA6046 Mirrored Floor Obelisk

A grand scale decorative obelisk that will be a perfect accent for an impressive entry foyer or large hallway. Crafted of inlaid antiqued mirror with antiqued silver leaf finish and resting on cast fiberglass base with animal paw feet.

W23 in. D23 in. H73 in.



SA6038 Decorative Finial

An eye-catching accessory for traditional styling, this decorative finial features inlaid antiqued mirror capped by a gold leaf flame finial and resting on an antiqued silver leaf finish base.

W11.5 in. D11.5 in. H38.5 in.



SA6044 Accent Books

Used singly or in groups, these parchment covered faux books of English deeds make a wonderful accessory for a traditional bookcase or shelf.

Assorted sizes: **H 8 in. - 11 in. W 12 in.**



SA6049 Assorted Shells - Set of 20

A set of beautiful shells in an antique silver electroform finish, assorted sizes that are perfect for placing throughout your room.



Yew Wood

Handsome cross sections of natural finished Yew wood resting on Macassar ebony veneer bases. Available in three sizes, for use singly or in groupings.

SA6011 Small

W 9.5 in. D 5.5 in. H 14.5 in.

SA6043 Medium

W 12.75 in. D 5.5 in. H 18 in.

SA6012 Large

W 15 in. D 6 in. H 24 in.







SA6005 Framed Intaglios - Set of Six

Each of the six intaglios in this set is a different engraving in stone, framed in select Asian hardwood solids with an antique gold leaf finish. Use singly, in pairs or in a grouping of the entire six.

W19 in. D1 in. H23 in.



SA6050L Wall Decoration - Left

Your garden will always be in bloom with this unique wall decoration crafted in wrought iron with an antique bronze finish and mother of pearl and exotic black lip pearl accents. (The same wall decoration is available in a right side version as SA6050R)

W33 in. D1 in. H52 in.



SA6050R Wall Decoration - Right

Your garden will always be in bloom with this unique wall decoration crafted in wrought iron with an antique bronze finish and mother of pearl and exotic black lip pearl accents. (The same wall decoration is available in a left side version as SA6050L)

W33 in. D1 in. H52 in.



SA6064 Wall Painting

W28 in. D1.5 in. H33 in.



SA6065 Wall Painting

W28 in. D1.5 in. H33 in.

Each of these striking wall paintings is handpainted onto select Asian hardwoods with an antique grey finish and features a different urn motif. Use individually or in groupings to bring classical elegance to any setting.



SA6066 Wall Painting

W28 in. D1.5 in. H33 in.



SA6067 Wall Painting

W28 in. D1.5 in. H33 in.

Numerical Index

Item	Category	Page
SA6000 Wall Shelf	Sconces & Shelves	33
SA6001 Urn on Pedestal	Urns & Planters	39
SA6002 Urn on Pedestal	Urns & Planters	39
SA6003 Planter	Urns & Planters	40
SA6004 Planter	Urns & Planters	40
SA6005 Framed Intaglios - Set of Six	Wall Art	49
SA6006 Urn	Urns & Planters	41
SA6007 Urn	Urns & Planters	41
SA6008 Corbel - Pair	Sconces & Shelves	34
SA6011 Yew Wood - Small	Unique Accessories	47
SA6012 Yew Wood - Large	Unique Accessories	47
SA6013 Waste Can	Vase & Obelisk	44
SA6015 Bamboo Tray	Trays & Plate	37
SA6017 Tray	Trays & Plate	37
SA6018 Candlestick	Candlesticks & Candlestands	30
SA6023 Hurricane Lamp	Candlesticks & Candlestands	29
SA6024 Candlestands - Pair	Candlesticks & Candlestands	30
SA6028 Shell Plates - Pair	Trays & Plate	37
SA6034 Antiqued Mirrored Vase	Vase & Obelisk	44
A6035 Candlestand	Candlesticks & Candlestands	29
SA6038 Decorative Finial	Vase & Obelisk	45
SA6039 Obelisk	Vase & Obelisk	44
SA6041 Mirrored Obelisk	Vase & Obelisk	43
SA6042 Mirrored Obelisk	Vase & Obelisk	43
SA6043 Yew Wood - Medium	Unique Accessories	47
SA6044 Accent Books	Unique Accessories	47
SA6046 Mirrored Floor Obelisk	Vase & Obelisk	45
SA6049 Assorted Shells - Set of 20	Unique Accessories	47
SA6050L Wall Decoration - Left	Wall Art	50
SA6050R Wall Decoration - Right	Wall Art	50
SA6052 Candle Holder - Set of Three	Candlesticks & Candlestands	30
SA6054 Candle Stand	Candlesticks & Candlestands	31
SA6055 Candle Stand	Candlesticks & Candlestands	31
SA6056 Corbel - Pair	Sconces & Shelves	34
SA6064 Wall Painting	Wall Art	51
SA6065 Wall Painting	Wall Art	51
SA6066 Wall Painting	Wall Art	51
SA6067 Wall Painting	Wall Art	51
SA8005 Table Lamp	Table Lamps	6
SA8006 Table Lamp	Table Lamps	7
SA8007 Table Lamp	Table Lamps	6
SA8009 Table Lamp	Table Lamps	7
SA8010 Table Lamp	Table Lamps	6

SA8012 Table Lamp	Table Lamps	7
SA8013 Table Lamp	Table Lamps	8
SA8014 Floor Lamp	Floor Lamps	15
SA8015 Floor Lamp	Floor Lamps	17
SA8022 Chandelier	Chandeliers	22
SA8023 Chandelier	Chandeliers	23
SA8026 Chandelier	Chandeliers	24
SA8028 Chandelier	Chandeliers	19
SA8030 Chandelier	Chandeliers	19
SA8031 Chandelier	Chandeliers	22
SA8033 Chandelier	Chandeliers	23
SA8034 Chandelier	Chandeliers	24
SA8040 Wall Sconce	Sconces & Shelves	34
SA8042 Wall Sconce	Sconces & Shelves	35
SA8044 Chandelier	Chandeliers	25
SA8045 Chandelier	Chandeliers	25
SA8056 Table Lamp	Table Lamps	8
SA8057 Table Lamp	Table Lamps	8
SA8058 Table Lamp	Table Lamps	9
SA8059 Table Lamp	Table Lamps	9
SA8060 Table Lamp	Table Lamps	9
SA8061 Table Lamp	Table Lamps	10
SA8064 Table Lamp	Table Lamps	5
SA8066 Table Lamp	Table Lamps	10
SA8068 Table Lamp	Table Lamps	11
SA8072 Chandelier	Chandeliers	19
SA8073 Chandelier	Chandeliers	20
SA8075 Chandelier	Chandeliers	27
SA8080 Chandelier	Chandeliers	27
SA8082 Wall Sconce - Pair	Sconces & Shelves	33
SA8083 Wall Sconce - Pair	Sconces & Shelves	35
SA8086 Table Lamp	Table Lamps	12
SA8092 Chandelier	Chandeliers	21
SA8094 Chandelier	Chandeliers	20
SA8096 Table Lamp	Table Lamps	5
SA8098 Table Lamp	Table Lamps	12
SA8101 Table Lamp	Table Lamps	13
SA8104 Chandelier	Chandeliers	21
SA8110 Chandelier	Chandeliers	26
SA8111 Table Lamp	Table Lamps	12
SA8113 Floor Lamp	Floor Lamps	15
SA8115 Table Lamp	Table Lamps	13
SA8116 Table Lamp	Table Lamps	13
SA8117 Floor Lamp	Table Lamps	16
SA8120 Table Lamp	Table Lamps	11
SA8121 Floor Lamp	Floor Lamps	16

CENTURY FURNITURE®

Infinite Possibilities. Unlimited Attention.®
CenturyFurniture.com

P.O. Box 608 | Hickory, NC 28603

Main Office: 828.328.1851
Customer Service Fax: 828.326.8224

SC/FCC/HA/7.5M/4-10

© 2010 Century Furniture

